

St. Aldhelm's Church, Corsham

SAT. CAFÉ - Meet old friends, make new friends - every Saturday, 10.00am-12noon, in the church with a book swap on the first Saturday each month; COFFEE 'n CHAT every Tuesday, 10.00-11.30am; CHURCH LUNCH last Friday in the month, 12noon-1.00pm. ALL WELCOME.

Whitley Methodist Church

CAFÉ IN THE CHURCH, 10.00am-12noon, every Tuesday. If you haven't visited Whitley's café yet, come along and give it a try; it's a great place to bring or meet a friend.

Holt U.R.C.

Every third Saturday in the month, 9.30-11.30am, there is a BOOK SWAP in the church hall; the next one therefore is Saturday 18th August 2018.

Steeple Ashton **CAMEO** not meeting in August, will be back in September!

Five other regular monthly COFFEE MORNINGS; everyone welcome.

First Saturday in the month, 4th August

Westbury U.R.C. 10.30am-12noon;

United Church, B-on-A from 10am

Second Saturday in the month,

11th August

Warminster United Church

Melksham United Church

both 10.00am-12noon

Winsley Methodist Church, 10.30-12noon



Bradford on Avon United Church . . .

. . . has been blessed by a beautiful Cross, gifted to us by Richard Filler, a well known wood sculptor living in North Somerset. The Cross has been made entirely from drift wood found on the local river banks. If you are visiting B.O.A. do contact us and we will arrange for you to see it.

The United Church in Bradford on Avon said its farewell to Rev Simon Edwards at the Sunday morning Communion Service on 8th July. Presentations were made to the family, and the Junior Church presented books to the children.

At the same service, the new projection system was dedicated to the memory of Dorothy Spring, whose legacy made it possible.

AUGUST

Wesley Road Methodist Church, Trowbridge

Tuesday 7th, POETRY in the church lounge, 2.00-4.00pm.

Tuesday 21st, ART in the church lounge, we will be exploring the use of oil pastels, 2.00-4.00pm. All welcome, with or without experience.

Holt U.R.C.

Saturday 11th, CREAM TEAS for the Area Project SEND A COW, 3.00pm. It is to be held in the garden of one of the church's members; anyone who would like to come along, please call Clive on 01225 765556 for venue details.

SEPTEMBER

Wesley Road Methodist Church, Trowbridge

Saturday 1st, BREAKFAST PRAISE Bacon butties at 9.00am followed by an hour of singing old and new songs. All welcome.

Tuesday 4th, POETRY in the church lounge, 2.00-4.00pm.

Saturday 15th, Welcome and Induction Service for Rev. Tracey Lewis, U.R.C. minister) 3.00pm.

Tuesday 18th, ART, 2.00-4.00pm in the church lounge - we will be using inks in this session. Again all welcome, with or without experience.

SEPTEMBER (contd.) at Wesley Road Methodist Church,
Commencing Saturday 22nd September, monthly Bible Study - **JONAH**,
10.00am. Please read the book of Jonah as many times as you wish before
the first session and we hope to open this book with discussion and
questions. Everyone is welcome. If you wish any more information,
please contact Bob and/or Maree on 01225 755372.
(The 2 other Saturdays are 20th October and 17th November.) **

OCTOBER

Thursday 25th, Area Meeting at Holt U.R.C., 7.30pm

Wesley Road Methodist Church, Trowbridge

Saturday 29th, studying the book of JONAH; see September **

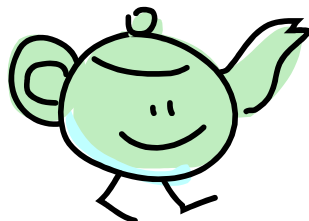
NOVEMBER

Wesley Road Methodist Church, Trowbridge

Saturday 17th, studying the book of JONAH; see September **

St.Arbucks, 1 Church Street, Market Lavington (across the road from
the Post Office) (01380 816145); Serving toasted sandwiches, filled
rolls; cake and coffee; hot drinks and ice cream. Free Wi-Fi

OPENING TIMES



Monday:	10.00am-4.30pm
Tuesday:	10.00am-4.30pm
Wednesday:	10.00am-4.30pm
Thursday:	closed **
Friday:	10.00am-4.30pm
Saturday:	10.00am-1.00pm

Please note opening times for Monday, Friday and Saturday have changed.

** For Thursdays in August, that is 2nd, 9th, 16th, 23rd. - St.Arbucks are
open 1.30-4.30pm, serving Summer Cream Teas.

WILTSHIRE UNITED AREA

