

St. Aldhelm's Church, Corsham

SAT. CAFÉ - Meet old friends, make new friends - every Saturday, 10.00am-12noon, in the church with a book swap on the first Saturday each month; COFFEE 'n CHAT every Tuesday, 10.00-11.30am; CHURCH LUNCH last Friday in the month, 12noon-1.00pm, no booking needed.

Whitley Methodist Church

CAFÉ IN THE CHURCH, 10.00am-12noon, every Tuesday; coffee, tea, cake and biscuits - all welcome! If you haven't visited Whitley's café yet, come along and give it a try; it's a great place to bring or meet a friend.

Holt U.R.C.

Every third Saturday in the month from 9.30-11.30am, there is a BOOK SWAP in the church hall; the next one is Sat. 15th July 2017.

Three other regular monthly COFFEE MORNINGS; everyone welcome.

First Saturday in the month, 1st July:

Westbury U.R.C., 10.30am-12noon;

United Church, Bradford-on-Avon
from 10am

Second Saturday in the month, 8th July:

Warminster United Church

10.00am-12noon;



JULY

Studley Methodist Church

Saturday 1st, QUIZ NIGHT, with refreshments, supporting Action for Children, £2.50 - 7.30pm. In case you are not familiar with Studley Church, it is midway between Calne and Chippenham; you can park at the Saw Mills. Any questions, ring Eric/Helen on 01380 870922.

Monks Chapel

Sunday 9th, SUMMER CAROL SERVICE, 2.45pm, led by Mr. Hugh Gough and members of the Congregation. ALL WELCOME.

Whitley Methodist Church

Saturday/Sunday 15th/16th, Whitley are celebrating their **150th Anniversary 1867-2017** and invite everyone to come and help them celebrate this special event. Events - slide shows + photographic history of the church; flower displays; raffle - all to see while you enjoy a **Traditional Cream Tea**. Saturday and Sunday both open 2.00-4.00pm, with a 10.30am service on the Sunday led by Rev. Cathy Arscott and followed by lunch (for catering purposes, please let them know if you are to attend). For more information contact Gill Fletcher on 01225 708449.

Wesley Road Methodist Church

Saturday 15th, at 7.00pm Wesley Road will be holding a B.B.C evening in the church lounge ...

B for Beetle Drive, B for Bangers and C for Crumbles ...

tickets will be available from Linda Gowen (tel: 01225 762097) for a suggested donation of £3.50 for adults and £2 for children. There will be prizes for Top Adult and Top Child, but all children will go away with a small prize. Please support this event and help us to raise funds for Wiltshire Air Ambulance and our own church.

Sunday 16th, MESSY CHURCH, 4.00-6.00pm. Fun, crafts, celebration time and free afternoon tea. Everyone invited - old and young. You do not have to belong to a church but children must be accompanied by an adult. Entrance free, donations welcome. www.messychurch.org.uk

Melksham United Church

Sunday 23rd, Rev. Cathy's farewell service; tea etc. 5.00pm followed by the service led by Rev. Ward Jones at 6.00pm.

~~~~~

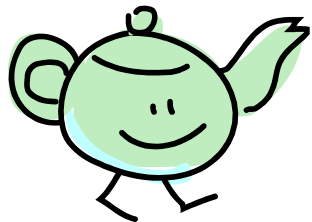
**Access to the United Area website** - [www.wiltsunitedchurches.org.uk](http://www.wiltsunitedchurches.org.uk) is always available for individual churches to advertise their events and add items of news. There is no cost in adding information onto the site. Just email [webmaster@wiltsunitedchurches.org.uk](mailto:webmaster@wiltsunitedchurches.org.uk)



~~~~~

St.Arbucks, 1 Church Street, Market Lavington (across the road from the Post Office); Serving coffees, teas, milkshakes, hot chocolates, cakes, ice creams! Soup and toasted sandwiches!

OPENING TIMES



Monday: 1.30-4.30pm
Tuesday: 10.00am-4.30pm
Wednesday: 10.00am-4.30pm
Thursday: closed
Friday: 10.00am-5.00pm
Saturday: 9.30am-12.30pm

WILTSHIRE UNITED AREA