

St. Aldhelm's Church, Corsham

SAT. CAFÉ - Meet old friends, make new friends - every Saturday, 10.00am-12noon, in the church with a book swap on the first Saturday each month; COFFEE 'n CHAT every Tuesday, 10.00-11.30am; CHURCH LUNCH last Friday in the month, 12noon-1.00pm. ALL WELCOME.

Whitley Methodist Church

CAFÉ IN THE CHURCH, 10.00am-12noon, every Tuesday. If you haven't visited Whitley's café yet, come along and give it a try; it's a great place to bring or meet a friend.

Holt U.R.C.

Every third Saturday in the month, 9.30-11.30am, there is a BOOK SWAP in the church hall; the next one therefore is Saturday 19th May 2018.

Steeple Ashton Methodist Church

CAMEO every Thursday from 2.30-4.00pm - Come And Meet Each Other; a friendly gathering for anyone needing some company, to enjoy a cuppa' and share your news or woes.

Four other regular monthly COFFEE MORNINGS; everyone welcome.

First Saturday in the month, 5th May
Westbury U.R.C. 10.30am-12noon;

United Church, B-on-A from 10am

Second Saturday in the month,
12th May

Warminster United Church

Melksham United Church

both 10.00am-12noon



Bradford on Avon United Church . . .

. . . has been blessed by a beautiful Cross, gifted to us by Richard Filler, a well known wood sculptor living in North Somerset. The Cross has been made entirely from drift wood found on the local river banks. If you are visiting B.O.A. do contact us and we will arrange for you to see it.

MAY

St. Aldhelm's Church, Corsham

Bank Holiday Monday 7th, come along for **AFTERNOON TEA**, from 2.30-4.30pm. Hot/cold drinks, scones or cakes. Everyone welcome

St. Andrew's Church, Devizes

Bank Holiday Monday 7th, **BIG BREAKFAST** with a Plant Sale from 8.00-11.00am, in St. Andrew's Church Hall, Long Street, Devizes.
Menu with prices - please just come along.

Bradford on Avon United Church

Wednesday 9th, the United Church now has a new series of meetings, "Vision For Worship", meeting quarterly to carry forward ideas first originated at the "Away Day" held in 2017. All their members are **encouraged** to say how they see worship developing in the future in their Church. Lively meetings!

Melksham United Church

Saturday 12th, **SPRING BAZAAR**, 10.00am-12noon.

Holt U.R.C.

Friday 25th, Chippenham Male Voice Choir, commencing 7.30pm. Tickets on the door or from Holt Superstore @ £8.00. Funds will go towards our hall refurbishment.

Wesley Road Methodist Church, Trowbridge

Saturday 12th, **MUSICAL GIFT DAY** in the church and in the hall! See flyer attached telling you all that is happening.

Tuesday 15th, **ART AT WESLEY ROAD** - the second meeting will take place between 2pm and 4pm in the church lounge. Beginners and those with some experience are welcome. Materials will be provided. Entrance free but donations welcome. Come and join us.

Sunday 20th, **MESSY CHURCH** from 8.30am to 10.00am Join us for breakfast then enjoy fun, crafts and a time of celebration. All welcome but children must bring an adult with them. Entrance free. Donations welcome.

MAY (contd. for Wesley Road Methodist Church)

Writers and Poets Corner on first Tuesday of each month. Whether you have not put pen to paper since you left school or are a published poet and author, you are very welcome to join this hopeful group from 2.00-4.00pm on 1st **MAY** for the first meeting. The only requirement is that you want to have fun writing - on offer will be bags of encouragement. Just turn up to **WESLEY ROAD** where we will be in what is known as **THE LOUNGE** with your pen and paper and let's see what happens!

JUNE

Bromham Methodist Church

Thursday 7th, AREA MEETING, 7.30pm (7.00pm for tea/coffee).

St. Andrew's Church, Devizes

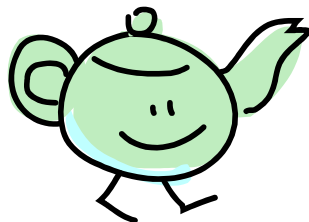
Sunday 10th, AREA SERVICE commencing at 10.30am. Individual churches themselves must decide whether they cancel their morning services.

Wesley Road Methodist Church, Trowbridge

Saturday 2nd, this is THE PLACE to be on this day, in the Church Lounge for BREAKFAST PRAISE - Bacon Butties from 9am and SING PRAISE from 9.30am. Everybody is very welcome to come and praise God with us.

.....
St. Arbucks, 1 Church Street, Market Lavington (across the road from the Post Office) (01380 816145); Serving toasted sandwiches, filled rolls; cake and coffee; hot drinks and ice cream. Free Wi-Fi

OPENING TIMES



Monday: 10.00am-4.30pm
Tuesday: 10.00am-4.30pm
Wednesday: 10.00am-4.30pm
Thursday: closed
Friday: 10.00am-4.30pm
Saturday: 10.00am-1.00pm

Please note opening times for Monday, Friday and Saturday have changed.

~~~~~

# WILTSHIRE UNITED AREA

