

### **St. Aldhelm's Church, Corsham**

SAT. CAFÉ - Meet old friends, make new friends - every Saturday, 10.00am-12noon, in the church with a book swap on the first Saturday each month; COFFEE 'n CHAT every Tuesday, 10.00-11.30am; CHURCH LUNCH last Friday in the month, 12noon-1.00pm. ALL WELCOME.

### **Whitley Methodist Church**

CAFÉ IN THE CHURCH, 10.00am-12noon, every Tuesday. If you haven't visited Whitley's café yet, come along and give it a try; it's a great place to bring or meet a friend.

Five other regular monthly COFFEE MORNINGS; everyone welcome.

First Saturday in the month, **2<sup>nd</sup> March**

**Westbury U.R.C.** 10.30am-12noon;

**United Church, B-on-A** from 10am

**Bromham Methodist Church**, 10.00-12noon

Second Saturday in the month, **9<sup>th</sup> March**

**Warminster United Church**,

10.00am-12noon

**Winsley Methodist Church**, 10.30-12noon



Every third Saturday in the month in the church hall, **Holt U.R.C.** has a book swap, 9.30-11.30am; next one is Saturday **16<sup>th</sup> March**.

### **Steeple Ashton Methodist Church**

CAMEO every Thursday from 2.30-4.00pm - Come and Meet Each Other, a friendly gathering for anyone needing some company, to enjoy a cuppa' and share your news or woes.

**Bradford on Avon United Church** has 'Fresh Expressions' on the second Sunday of the month (in lieu of an evening service), We meet at 3pm and finish at 4'ish. We suggest each member bring along a non Church friend, to see that we are a warm and friendly group, and come again and get to know us, and enjoy the refreshments on offer.

## **APRIL**

### **St. Andrew's Church, Devizes**

Saturday 6<sup>th</sup> SPRING COFFEE MORNING with cake stall and Tombola, in support of WaterAid, 10.00am to 12noon.

### **Melksham United Church**

Saturday 27<sup>th</sup>, QUIZ EVENING with a ploughman's supper, 6.00-9.00pm; tickets £5.00 for Church funds (essential for catering) from Pamela 01225 703889 or Geraldine 01225 705806. We work in tables of 4 but these can be made up when you arrive.

### **Wesley Road Methodist Church, Trowbridge**

Tuesday 2<sup>nd</sup>, Poetry writing group at meets at 2.00pm. All welcome whether you think you can write or not!

Saturday 27<sup>th</sup>, BREAKFAST PRAISE - Bacon butties (and maybe Hot Cross buns too!) at 9.00am, followed by praise.

**Easter Services** at Wesley Road:

Maunday Thursday 18<sup>th</sup>, BRING AND SHARE SUPPER 6.00pm, followed by a Tenebrae service at 7.30pm, led by Rev. Tracey Lewis.

Good Friday 19<sup>th</sup>, Service of the Nails, 12.15pm, which will follow the Walk of Witness through Trowbridge.

Easter Sunday 21<sup>st</sup>, morning worship with Holy Communion, 10.30pm.

### **Westbury U.R.C.**

Easter Sunday 21<sup>st</sup>, there will be a showing of the film RISEN. This will be in their church hall. EVERYONE WELCOME.

### **Monks Chapel**

Their PLAN for April: 7<sup>th</sup> Mike Read from Swindon, 14<sup>th</sup> Tom Hill, 21<sup>st</sup> Rev. Heather Wilson H.C., 28<sup>th</sup> Bob Farrimond

Other news: there is a new book out this month entitled *Deepest Wiltshire* and in the section 'Worship in Wiltshire' Monks is mentioned. We will be going to the book launch in Devizes so will let you know later if it is worth the money!

## MAY

### **Wesley Road Methodist Church, Trowbridge**

Saturday 11<sup>th</sup> , ANNUAL BIBLE SOCIETY COFFEE MORNING,  
10.00am to 12 noon.

### **Melksham United Church**

Saturday 11<sup>th</sup> , SPRING BAZAAR with a variety of stalls.

... more dates for your diaries:

Saturdays 13<sup>th</sup> July Coffee morning with books and cakes

14<sup>th</sup> September, Coffee morning with organ music

### **St. Andrew's Church, Devizes**

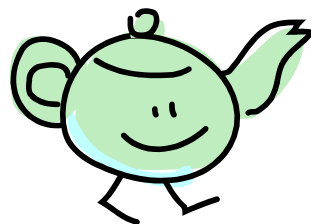
Bank Holiday Monday 6<sup>th</sup>, from 8.30-11.00am, Annual BIG BREAKFAST  
with PLANT SALE. Menu with prices. All ages welcome. Level  
access.

### **St. Aldhelm's Church, Corsham**

Bank Holiday Monday 6<sup>th</sup>, AFTERNOON TEA: more info to follow  
(hopefully!).

-----  
**St.Arbucks**, 1 Church Street, Market Lavington (across the road from  
the Post Office) (01380 816145); Serving toasted sandwiches, filled  
rolls; cake and coffee; hot drinks and ice cream. Free Wi-Fi

#### OPENING TIMES



Monday: 10.00am-4.30pm  
Tuesday: 10.00am-4.30pm  
Wednesday: 10.00am-4.30pm  
Thursday: closed  
Friday: 10.00am-4.30pm  
Saturday: 10.00am-1.00pm

## WILTSHIRE UNITED AREA

