

### **St. Aldhelm's Church, Corsham**

SAT. CAFÉ - Meet old friends, make new friends - every Saturday, 10.00am-12noon, in the church with a book swap on the first Saturday each month; COFFEE 'n CHAT every Tuesday, 10.00-11.30am; CHURCH LUNCH last Friday in the month, 12noon-1.00pm. ALL WELCOME.

### **Whitley Methodist Church**

CAFÉ IN THE CHURCH, 10.00am-12noon, every Tuesday. If you haven't visited Whitley's café yet, come along and give it a try; it's a great place to bring or meet a friend.

Five other regular monthly COFFEE MORNINGS; everyone welcome.

First Saturday in the month, **2<sup>nd</sup> March**

**Westbury U.R.C.** 10.30am-12noon;

**United Church, B-on-A** from 10am

**Bromham Methodist Church**, 10.00-12noon

Second Saturday in the month, **9<sup>th</sup> March**

**Warminster United Church,**

10.00am-12noon

**Winsley Methodist Church,** 10.30-12noon



Every third Saturday in the month in the church hall, **Holt U.R.C.** has a book swap, 9.30-11.30am; next one is Saturday **16<sup>th</sup> March**.

### **Steeple Ashton Methodist Church**

CAMEO every Thursday from 2.30-4.00pm - Come and Meet Each Other, a friendly gathering for anyone needing some company, to enjoy a cuppa' and share your news or woes.

**Bradford on Avon United Church** has 'Fresh Expressions' on the second Sunday of the month (in lieu of an evening service), We meet at 3pm and finish at 4'ish. We suggest each member bring along a non Church friend, to see that we are a warm and friendly group, and come again and get to know us, and enjoy the refreshments on offer.

## **MARCH**

### **St. Aldhelm's Church Corsham**

Saturday 16<sup>th</sup>, LENT LUNCH; ring Phyllis on 01249 710417 for more info . . also LENT GROUP meetings at 7.00pm on March 11<sup>th</sup>, 19<sup>th</sup>, 25<sup>th</sup> and April 1<sup>st</sup> and 8<sup>th</sup>.

### **Steeple Ashton Methodist Church**



Saturday 2<sup>nd</sup>, Steeple Ashton are hoping to have a Soup and Pud lunch at 12.00 noon. Also enjoy David's short talk "Sabbatical Happenings". Entrance by donation in aid of 'Send a cow'. All are welcome, but it would be useful if they could have an idea of numbers (for catering purposes) of those wishing to attend: tel: 01380 870623 or

email [tonyali1947@yahoo.com](mailto:tonyali1947@yahoo.com)

### **Melksham United Church**

Saturday 9<sup>th</sup>, COFFEE MORNING with books, preserves; 10.00am-12noon.

### **Wesley Road Methodist Church, Trowbridge**

Saturday 2<sup>nd</sup>, FAIRTRADE COFFEE MORNING in the church hall, 10.00am-12noon; Stalls - cakes, books, bric-a-brac, Traidcraft food and

crafts, jewellery; refreshments including BANANA SPLITS! Everyone welcome, bring your friends.

Saturday 17<sup>th</sup>, Christian Aid are holding an event with guest speaker Joanna Tom-Kargo from Sierra Leone. It is the most dangerous place in the world to become a mum: ten women die every day in childbirth. Joanna is a trained nurse and Senior Programme Officer for Christian Aid's Health Legacy programme. Doors open at 5.00pm for a 6.00pm start; the service will be followed by tea and cake.

**Wesley Road ... contd.**

Tuesday 19<sup>th</sup>, CHURCH ART GROUP from 2.00-4.00pm. Those with experience and complete beginners are all welcome. FREE entry.

## APRIL

### **St. Andrew's Church, Devizes**

Saturday 6<sup>th</sup>, SPRING COFFEE MORNING with cake stall and Tombola, in support of WaterAid, 10.00am to 12noon.

### **Melksham United Church**

Saturday 27<sup>th</sup>, QUIZ EVENING with a ploughman's supper, 6.00-9.00pm; further details later ...

... more dates from Melksham for your diaries:

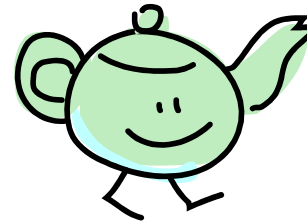
Saturdays 11<sup>th</sup> May - Spring Bazaar with a variety of stalls;

13<sup>th</sup> July, coffee morning with books and cakes;

14<sup>th</sup> September, coffee morning with organ music.

If any church would like soft or hardback copies of Hymns and Psalms, Rev. Gary Gotham would love to hear from you (tel. 01380 724264 or email [gary.gotham@gmail.com](mailto:gary.gotham@gmail.com)).

-----  
**St. Arbucks**, 1 Church Street, Market Lavington (across the road from the Post Office) (01380 816145); Serving toasted sandwiches, filled rolls; cake and coffee; hot drinks and ice cream. Free Wi-Fi



Tuesday: 10.00am-4.30pm  
Wednesday: 10.00am-4.30pm  
Thursday: closed  
Friday: 10.00am-4.30pm  
Saturday: 10.00am-1.00pm

---

Wiltshire United Area Newsletter - issue March 2019

# WILTSHIRE UNITED AREA



## OPENING TIMES

Monday: 10.00am-4.30pm