

### **St. Aldhelm's Church, Corsham**

SAT. CAFÉ - Meet old friends, make new friends - every Saturday, 10.00am-12noon, in the church with a book swap on the first Saturday each month; COFFEE 'n CHAT every Tuesday, 10.00-11.30am; CHURCH LUNCH last Friday in the month, 12noon-1.00pm. ALL WELCOME.

### **Whitley Methodist Church**

CAFÉ IN THE CHURCH, 10.00am-12noon, every Tuesday. If you haven't visited Whitley's café yet, come along and give it a try; it's a great place to bring or meet a friend.

Five other regular monthly COFFEE MORNINGS; everyone welcome.

First Saturday in the month, **2<sup>nd</sup> February**

**Westbury U.R.C.** 10.30am-12noon;

**United Church, B-on-A** from 10am

**Bromham Methodist Church**, 10.00-12noon

Second Saturday in the month,

**9<sup>th</sup> February**

**Warminster United Church**

**Melksham United Church**

both 10.00am-12noon

**Winsley Methodist Church**, 10.30-12noon

Every third Saturday in the month in the church hall, **Holt U.R.C.** has a book swap, 9.30-11.30am; next one is Saturday **16<sup>th</sup> February**.

### **Steeple Ashton Methodist Church**

CAMEO every Thursday from 2.30-4.00pm - Come and Meet Each Other, a friendly gathering for anyone needing some company, to enjoy a cuppa' and share your news or woes.

**Bradford on Avon United Church** has now had 2 'Fresh Expressions' on the second Sunday of the month (in lieu of an evening service), We meet at 3pm and finish at 4'ish. We suggest each member bring along a non Church friend, to see that we are a warm and friendly group, and come again and get to know us, and enjoy the refreshments on offer.



## **FEBRUARY**

### **Wesley Road Methodist Church, Trowbridge**

Saturday 2<sup>nd</sup>, JUMBLE SALE - 2.00pm, Admission 20p.

Clothes, books, toys, bric-a-brac. ALL WELCOME!!

Tuesday 19<sup>th</sup>, Art Group, 2.00-4.00pm

Tuesday 23<sup>rd</sup>, Breakfast Praise. Bacon butties at 9.00am followed by mainly up-to-date praise singing from 9.30-10.30am.

### **St. Aldhelm's Church, Corsham**

Saturday 9<sup>th</sup>, JUMBLE SALE, 10.00am-12noon;

jumble, bric-a-brac and unwanted gifts. ALL WELCOME.

### **Warminster United Church**

Thursday 28<sup>th</sup>, AREA MEETING, 7.30pm (7.00pm for a cuppa").

### **Monks Chapel**

The members of Monks would love to see you, 2.45pm on Sunday afternoons; the preachers for February are Mrs. Pauline Tiller, Rev. Heather Wilson, Mrs. Joanne Williams and Mr. Norman Price.

## MARCH

### *St. Aldhelm's Church Corsham*

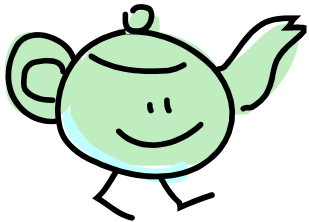
Saturday 16<sup>th</sup>, LENT LUNCH, more info to follow!

.. also LENT GROUP meeting at 7.00pm on March 11<sup>th</sup>, 19<sup>th</sup>, 25<sup>th</sup> and April 1<sup>st</sup> and 8<sup>th</sup>.

If any church would like soft or hardback copies of Hymns and Psalms, Rev. Gary Gotham would love to hear from you (tel. 01380 724264 or email [gary.gotham@gmail.com](mailto:gary.gotham@gmail.com)).

-----  
**St. Arbucks**, 1 Church Street, Market Lavington (across the road from the Post Office) (01380 816145); Serving toasted sandwiches, filled rolls; cake and coffee; hot drinks and ice cream. Free Wi-Fi

### OPENING TIMES



Monday:	10.00am-4.30pm
Tuesday:	10.00am-4.30pm
Wednesday:	10.00am-4.30pm
Thursday:	closed
Friday:	10.00am-4.30pm
Saturday:	10.00am-1.00pm

## WILTSHIRE UNITED AREA

