

St. Aldhelm's Church, Corsham

SAT. CAFÉ - Meet old friends, make new friends - every Saturday, 10.00am-12noon, in the church with a book swap on the first Saturday each month; COFFEE 'n CHAT every Tuesday, 10.00-11.30am; CHURCH LUNCH last Friday in the month, 12noon-1.00pm, except in December it is the 16th - carol singing in the Town Precinct in aid of Action for Children .

Whitley Methodist Church

CAFÉ IN THE CHURCH, 10.00am-12noon, every Tuesday. During December Whitley will be offering a Christmas Special of mince pie tea/coffee £1.00 - all welcome! If you haven't visited Whitley's café yet, come along and give it a try; it's a great place to bring or meet a friend. Not open on Boxing Day!
Book Swap opening times during the festive season - 2nd December and 6th January, 10.00am-12noon.

Holt U.R.C.

Every third Saturday in the month from 9.30-11.30am, there is a BOOK SWAP in the church hall; the next one therefore is Saturday 16th December - Christmas Book Swap

DECEMBER

Holt U.R.C.

Sunday 17th, Carols by Candlelight, 6.00pm; freewill offering goes to charity.

St. Aldhelm's Church, Corsham

Sunday 24th, Christmas Eve Carol Service, 4.00pm, led by Rev. Anne Dove .

Monday 25th, Christmas Day, 10.30 am morning service led by Rev. Wendy Tucker

Four other regular monthly COFFEE MORNINGS; everyone welcome.

First Saturday in the month, 2nd December
Westbury U.R.C. 10.30am-12noon;
United Church, Bradford-on-Avon
from 10am.

Second Saturday in the month,
9th December:
Warminster United Church
Melksham United Church
both 10.00am-12noon



JANUARY 2018

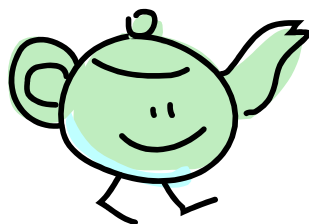
Revelation Christian Resource Centre

The trustees of the Revelation Christian Resource Centre announced last June that, sadly, they would be closing at the end of January 2018, bringing an end to almost 33 years of involvement in Chippenham. A number of factors came together to bring about this decision. Not only are people reading less than they used to, but the increasing popularity of purchasing on-line has meant sales of books from the shop are at a much lower level than they used to be. In addition, many of the Christian gifts/Bibles are imported from the United States and have thus become more expensive as the value of the pound has fallen. It has also been difficult to recruit volunteers to run the shop and the lease is due to expire in the next few years with no guarantee that it will be renewed.

We plan to continue to trade normally up to the end of the Christmas period although there will be no bookstalls or sale or return facility offered beyond mid-December and no credit/account facility offered beyond Christmas. During January we will have a big sale of any remaining stock. The last day of trading will be 31st January 2018.

~~~~~  
**St. Arbucks**, 1 Church Street, Market Lavington (across the road from the Post Office); Serving coffees, teas, milkshakes, hot chocolates, cakes, ice creams! Soup and toasted sandwiches!

### OPENING TIMES



Monday: 1.30-4.30pm  
Tuesday: 10.00am-4.30pm  
Wednesday: 10.00am-4.30pm  
Thursday: closed  
Friday: 10.00am-5.00pm  
Saturday: 9.30am-12.30pm



WILTSHIRE UNITED AREA