

### **St. Aldhelm's Church, Corsham**

SAT. CAFÉ - Meet old friends, make new friends - every Saturday, 10.00am-12noon, in the church with a book swap on the first Saturday each month . . .

. . . also COFFEE 'n CHAT every Tuesday, 10.00-11.30am, in room Galilee

### **Whitley Methodist Church**

CAFÉ IN THE CHURCH, 10.00am-12noon, every Tuesday; coffee, tea, cake and biscuits - all welcome! If you haven't visited Whitley's café yet, come along and give it a try; it's a great place to bring or meet a friend.

Three other regular monthly COFFEE MORNINGS; everyone welcome.

First Saturday in the month, 7<sup>th</sup> October

**Westbury U.R.C.**

10.30am-12noon;

**United Church, Bradford-on-Avon**

from 10am

Second Saturday in the month,

14<sup>th</sup> October:

**Warminster United Church**

10.00am-12noon;

**Melksham United Church**

10.00am-12noon



Access to the United Area website - [www.wiltsunitedchurches.org.uk](http://www.wiltsunitedchurches.org.uk) is always available for individual churches to advertise their events and add items of news. There is no cost in adding information onto the site. Just email [webmaster@wiltsunitedchurches.org.uk](mailto:webmaster@wiltsunitedchurches.org.uk)

### **Bradford-on-Avon United Church**

Rev. Ruth Whitehead, U.R.C. S.W. Synod Moderator, was welcomed to Bradford to take the Communion Service on Sunday 13<sup>th</sup> August.

Ruth stayed for coffee after the service; she met and chatted to a majority of the Church, and this was a warm and friendly time the members shared with her.

## **OCTOBER**

### **St. Andrew's Church, Devizes**

St. Andrew's welcome all ladies to join them for their new sessions of Ladies Evening Group meetings, 7.30pm, on the 1<sup>st</sup> and 3<sup>rd</sup> Tuesdays in each month, from September to June (no meetings in January). There is no membership fee - just come along if you see any meeting of interest - just £2.50 sub per meeting towards speakers' fees and refreshments.

Our full programme can be found from a link on the 'Groups' page [www.standrewsdevizes.org.uk](http://www.standrewsdevizes.org.uk) or ring Cynthia 01380 726373.

Tuesday 3<sup>rd</sup> October - SCOTLAND TRIP with Alan and Sarah Padwick.

### **Melksham United Church**

Saturday 7<sup>th</sup>, QUIZ EVENING with ploughman's supper. All Welcome.

Contact Church Secretary for further details.

### **Holt U.R.C.**

Sunday 8<sup>th</sup>, a CONCERT by Cloe Tyghe - singer, pianist - 3.00pm; tea and cakes to follow, £5.

Friday 20<sup>th</sup>, PUDDING AND QUIZ NIGHT, 7.30pm; teams of four. £3 per person.

Saturday 21<sup>st</sup>, BOOK SWAP, 8.30-11.30am, free to come in!

### **Steeple Ashton Methodist Church**

Saturday 14<sup>th</sup>, COFFEE MORNING with

Bring and Buy, 10.30-12noon. Entrance

£1.50; proceeds for church funds.

See poster attached.



### **Wesley Road Methodist Church**

Sunday 8<sup>th</sup>, SERVICE OF HEALING, led by Rev. Maree Farrimond, 4pm, followed by tea and cakes.

**NOVEMBER**

**Melksham United Church**

Saturday 18<sup>th</sup> , AUTUMN BAZAAR, more info to follow.

**Holt U.R.C.**

Saturday 4<sup>th</sup>, TABLE TOP SALE, 10.00am to 2.00pm.

Sunday 19<sup>th</sup>, CONCERT by Helen and Richard Bousefield - singers, flute, guitars - 3.00pm; tea and cakes to follow, £5.

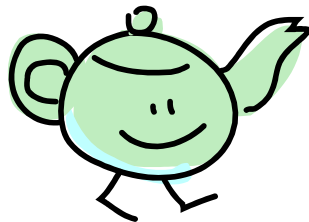
.....  
*A prayer for Walking the Way*

Lord of all,  
as you walked this earth sharing love, grace and mercy,  
we pray that we will place our footsteps in yours  
and walk where you lead  
as we live out your life in our daily living.  
For Jesus' sake.  
Amen



~~~~~  
**St.Arbucks**, 1 Church Street, Market Lavington (across the road from the Post Office); Serving coffees, teas, milkshakes, hot chocolates, cakes, ice creams! Soup and toasted sandwiches!

**OPENING TIMES**



Monday: 1.30-4.30pm  
Tuesday: 10.00am-4.30pm  
Wednesday: 10.00am-4.30pm  
Thursday: closed  
Friday: 10.00am-5.00pm  
Saturday: 9.30am-12.30pm

**WILTSHIRE UNITED AREA**